



538Wc Rectangular Plank Extension Table Top

38" x 60" – 75"

Congratulations!

This fine piece of furniture will make a gorgeous addition to your home. For the best results, read both the Assembly Instructions and Finishing Hints before you begin your project.

**For normal household use only.
NOT recommended for commercial use.**



Do not climb, sit or stand on this piece of furniture.

DESIGN SUBJECT TO CHANGE WITHOUT NOTICE.



P.O. Box 2827
Eugene, OR 97402 USA



CALL US FIRST!

DO NOT RETURN ITEM TO STORE

Service Policy: We will replace any part that is defective or missing or damaged during assembly. Please directly contact Whittier Wood Products customer service department (by phone, fax, mail or email) for a replacement part.

Hours: Our friendly customer service staff can be reached Monday-Friday 7:00 a.m. to 5:00 p.m. (Pacific Time). Or you may leave a message 24 hours a day, 7 days a week.

To Order: Provide the complete furniture model number (upper left corner of this page), the part letter/number, production code, quantity needed, reason for replacement and your full name and address along with a telephone number in case we need to contact you.

Parts ship from our Eugene, Oregon factory within one or two business days from the time we receive your request. Please allow five to ten business days for delivery.

800-653-3336

Outside U.S. or Canada: 541-687-0213

Fax: 541-687-2060 • www.whittierwood.com

Mail: P.O. Box 2827 • Eugene, Oregon 97402, U.S.A.

IMPORTANT NOTES:

- Before you begin your project, completely read the Assembly Instructions and Finishing Hints.
- Store this item: 1- in its box; 2- in a dry place; 3- in temperatures that range from 40° to 90° (not on a cold or possibly damp cement floor).
- Inspect your furniture periodically for any loose glue joints, screws or any other problem that might affect the stability of your furniture. Tighten or repair as needed.

Production Code:

VN

Rev. 09/09

538Wc Rectangular Plank Extension Table Top — Parts List

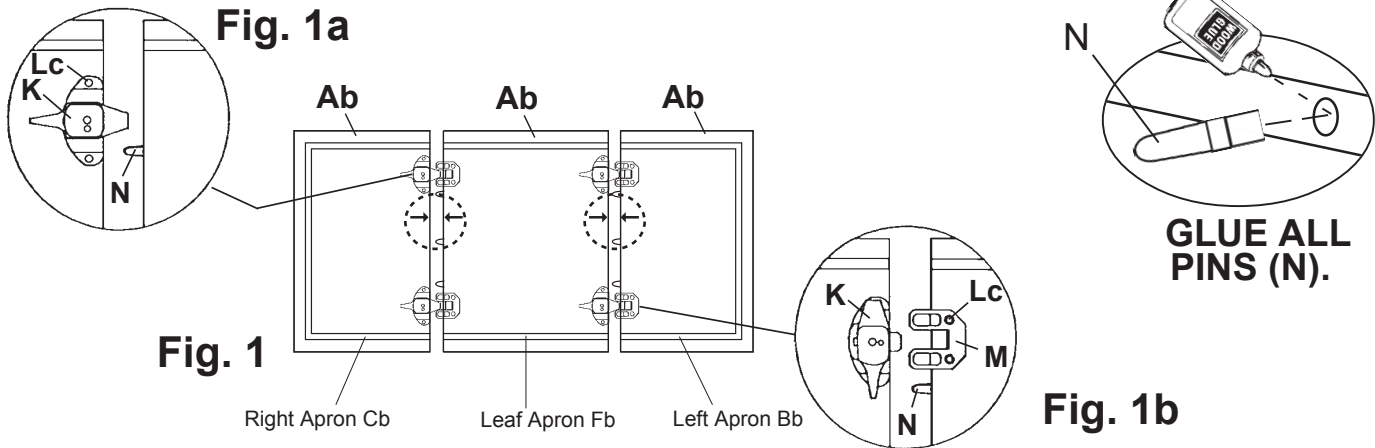
Before you begin assembly:

Please identify the parts and check that quantities received match those on this list.
If you need to replace a part, refer to the following letter and model name.

PART	QTY	PART	QTY	PART	QTY
Ab Table Top/Leaf	1/1	H #8 x 1¼" Pan Head Screw	24	P #12 x 1¾" Pan Head Screw	16
Bb Left Front/Back Apron.	2	(some inserted)		(inserted)	
Cb Right Front/Back Apron	2	I Brass Angle Brace	2	Q Leg Bracket (attached)	4
Db End Apron	2	J #10 x ¾" Brass Oval Head Screw	4	Rc #8 x 5/8" Flat Head Screw	16
Fb Leaf Apron	2	K Lever Lock	4	(inserted)	
		Lc #8 x 5/8" Flat Head Screw	16	S Apron Cap (attached)	4
		(for Lever Lock and Leveler Plate)		T 90 Deg. Bracket (attached)	4
		M Leveler Plate	4	U #6 x 5/16" Flat Head Screw	8
		N Guide Pin	6	(inserted)	
		O Table Slides (attached)	2	V #6 x ¾" Brass Flat Head Screw (inserted)	8

Assembly Instructions

TOOLS REQUIRED: Phillips Screwdriver, Wood Glue

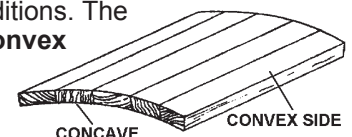


1. Place the Table Top and the Leaf (Ab) face down on a clean, protected surface. Make sure the arrows stamped on the table ends and leaves face each other (see dashed circles in Figure 1). Pull the sections slightly apart and glue Guide Pins (N) into the predrilled holes. The pins must all face the same direction. See Figure 1a.
2. Starting from one end of the table, lay out the Lever Locks (K) over the pre-punched screw holes. All the lever locks must face in the same direction on both sides of the table. See Figure 1a. Fasten the lever locks in place with #8 x 5/8" Flat Head Screws (Lc). Slide the Leveler Plate (M) into the lever locks and fasten with #8 x 5/8" Flat Head Screws (Lc) in predrilled holes. See Figure 1b.

SPECIAL INSTRUCTIONS

If a top or leaf panel should become cupped, do not be alarmed. The top was flat when it was manufactured. It is a natural characteristic of wood in an unfinished state to cup from uneven moisture conditions. The figure at the right shows an exaggerated view of what could happen. This only means that the **convex side has absorbed moisture, or the concave side has dried out.**

Usually a cupped panel will equalize and straighten out if both sides are exposed to similar conditions for a day or so.



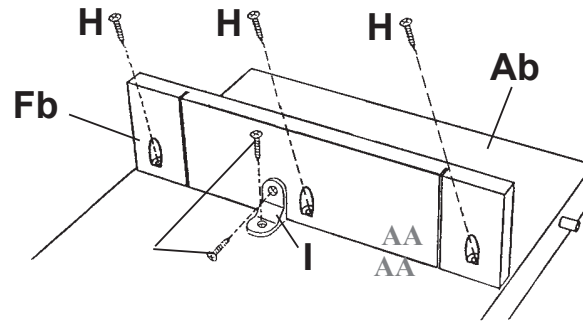


Fig. 3

3. To help you position the Leaf Aprons in their proper locations, the leaf and leaf aprons have been punched with matching letters (**AA/AA**, **BB/BB**, **CC/CC**, **DD/DD**). Insert one #8 x 1¼" Pan Head Screw (H) into the pocket drilled holes in each Leaf Apron (Fb) and fasten securely. See Figure 3. To increase support for the leaf aprons, fasten a Brass Angle Brace (I) just to the left or right of the center hole of the aprons with #10 x ¾" Brass Oval Head Screws (J). See Figure 3.

Finishing Hints

Choosing the Finish:

1. Choose a finish that will meet your expectations for the product you are finishing. Are you matching existing furniture or do you want a "natural" finish? Is the piece to be functional, decorative or both? The answers to these questions may affect the type of finish you choose.
2. Use products of the same brand to ensure compatibility of products.
3. **ALWAYS** follow the stain manufacturer's instructions. Alder is a porous hardwood and often looks best when following the finishing directions for softwoods
4. We recommend using a wood conditioner under oil base stains.
5. Work in a well ventilated and well lit area.

Getting Started

1. **Assembly Instructions may contain special finishing information for that item.** Read both the Assembly Instructions and these Finishing Hints completely before beginning.
2. Sand the entire piece, using #220 grit sandpaper. Sand with the grain of the wood on flat surfaces and opposite the grain on turnings. Some parts are plywood. Be careful not to sand through the veneer. End grain (table top ends, seat edges, grooves on turnings, etc.) accepts more stain. Extra sanding in these areas with a #320 grit sandpaper will reduce stain absorption, creating a more evenly stained piece.
3. When sanding is completed, wipe the surface of your furniture with a cloth or tack rag. Make sure the item is free of dust before proceeding.

Staining

1. Read and follow label directions. Stir stain well before starting.
2. Test stain on an inconspicuous spot on your project, or use the sample chip if one is provided. The sample chip must be sanded in the same way as your furniture kit to ensure the piece will accept the stain similarly. Put at least one coat of your top coat over the stain sample, as it also affects the look of the stain. **Test every type of wood that is in your kit.** Some of our products include more than one type of wood, which may react differently to the stain color. Sample chips for the different woods may be included. It may be necessary to add a second coat of stain to lighter woods to match the darker woods in your kit.

Basic Equipment:

- | | | |
|--|---|--|
| <input type="checkbox"/> Rubber gloves | <input type="checkbox"/> Tack cloth | <input type="checkbox"/> #220 & #320 sandpaper |
| <input type="checkbox"/> Rags | <input type="checkbox"/> Drop cloth | <input type="checkbox"/> Mineral spirits |
| <input type="checkbox"/> Paper towels | <input type="checkbox"/> Paint brushes (bristle and foam) | <input type="checkbox"/> Masking Tape |
| <input type="checkbox"/> Q-tips | | |

3. Apply stain with a poly brush or lint-free cloth. Apply stain over a small area and wipe off excess. Working in small areas will make the color easier to control.
4. Q-tips are ideal for hard to reach areas.
5. Allow to dry thoroughly before proceeding.

Applying the Top Coat:

No top coat is required if using paint.

1. **Always read and follow all label directions.** Stir your finish coat gently, **do not shake.** It will create bubbles that are hard to remove.
2. **All surfaces** (including the underside of table tops and inside drawers) **must be sealed with at least one layer of a top coat.** This will help minimize wood swelling, shrinkage, warping and cupping due to changes in moisture content or temperature.
3. We recommend that you **apply a minimum of two coats when using polyurethane or varnish (especially on all table top and work surfaces).** Sand lightly between coats using a #320 grit sandpaper or 00 steel wool for the smoothest possible finish.
4. Some water-based finishes tend to raise the grain slightly. This can be easily controlled with this sanding step. However, do not use steel wool when using water-based finishes. Strands of steel fiber caught in the wood can cause rust spots when coated with any water-based product.

Painting:

1. For best results when painting, first coat the wood with a primer. An oil based primer would be best for a smooth finish. If you do not wish to use a solvent based primer, a water based primer would work almost as well.
2. Buy a quality brand paint. You may use a satin, semi-gloss, or gloss sheen. Apply a second coat for a smooth finish. Lightly sand between coats using a #320 grit sandpaper, so that the second coat will bond well. Repeat as desired.
3. Since there is such a variation between paint manufacturers, refer to your paint supplier for specific advice on using the paint that you purchase.