

Shaker Bedroom Collection

(Candlelite Finish)

Assembly Instructions



1200AFVCL
Small 3-Drawer
Shaker Nightstand



1201AFVCL
3-Drawer
Shaker Nightstand



1226AFVCL
5-Drawer
Shaker Chest



1227AFVCL
9-Drawer
Shaker Dresser



1228AFVCL
10-Drawer
Shaker Dresser



1280AFVCL
6-Drawer
Shaker Chest



1281AFVCL
11-Drawer
Shaker Dresser

Congratulations!

This fine piece of furniture will make a handsome addition to your home.

**For normal household use only.
NOT recommended for commercial use.**



Do not climb, sit or stand on this piece of furniture.

Unload items from this unit prior to moving.

Before loading or moving this unit, check all screws and supports for tightness.

For maximum stability, attach unit to the wall using the enclosed hardware as per instructions.

DESIGN SUBJECT TO CHANGE WITHOUT NOTICE.

**Whittier
Wood**
FURNITURE

P.O. Box 2827
Eugene, OR 97402 USA



CALL US FIRST!

DO NOT RETURN ITEM TO STORE

Service Policy: We will replace parts which are defective, missing or damaged. Please contact Whittier Wood Products customer service department directly (by phone, fax, mail or E-mail) for replacement parts.

Hours: Our friendly customer service staff can be reached Monday-Friday 7:00 a.m. to 5:00 p.m. (Pacific Time). A message can be left 24 hours a day, 7 days a week.

To Order: Provide the complete furniture model number, part letter, production code, quantity needed, reason for replacement and your full name and address along with a telephone number in case we need to contact you.

Parts ship from our Eugene, Oregon factory within 1 or 2 business days from the time we receive the request. Please allow 5-10 business days for delivery.

800-653-3336

Outside U.S. or Canada: 541- 687- 0213

Fax: 541-687-2060 • www.whittierwood.com

Mail: P.O. Box 2827 • Eugene, Oregon 97402, U.S.A

IMPORTANT NOTES:

- Store the item: 1) in the box; 2) in a dry place; 3) in temperatures ranging from 40° to 90°. (Not on a cold, possibly damp, cement floor.)
- Inspect your furniture periodically for any loose glue joints or screws, or any other problem which may be affecting the stability of your furniture. Tighten or repair as needed.

Production Code:

VN

01/08

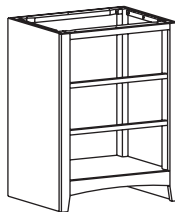
Shaker Bedroom Collection AFVCL

Parts List

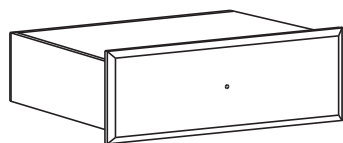
If you should need to replace a part please refer to the following list for part number.



Item No. Top Assembly
1200 — 1281AFVCL A



Item No. Case Only
1200 — 1281AFVCL B



Item No.	Drawer	Small Drawer	Medium Drawer	Large Drawer
1200 & 1201	C	NA	NA	NA
1226 — 1228	NA	C	NA	D
1280 & 1281	NA	C	D	E



Item No.	Drawer Box*	Small Drawer Box*	Medium Drawer Box*	Large Drawer Box*
1200 & 1201	D	NA	NA	NA
1226 — 1228	NA	E	NA	F
1280 & 1281	NA	F	G	H

* Does not include the Drawer Face



Item No.	Drawer Face	Small Drawer Face	Medium Drawer Face	Large Drawer Face
1200 & 1201	E	NA	NA	NA
1226 — 1228	NA	G	NA	H
1280 & 1281	NA	I	J	K

1201AFVCL shown in above drawings.

HARDWARE



L – Knob



M – Nylon Restraint Strap



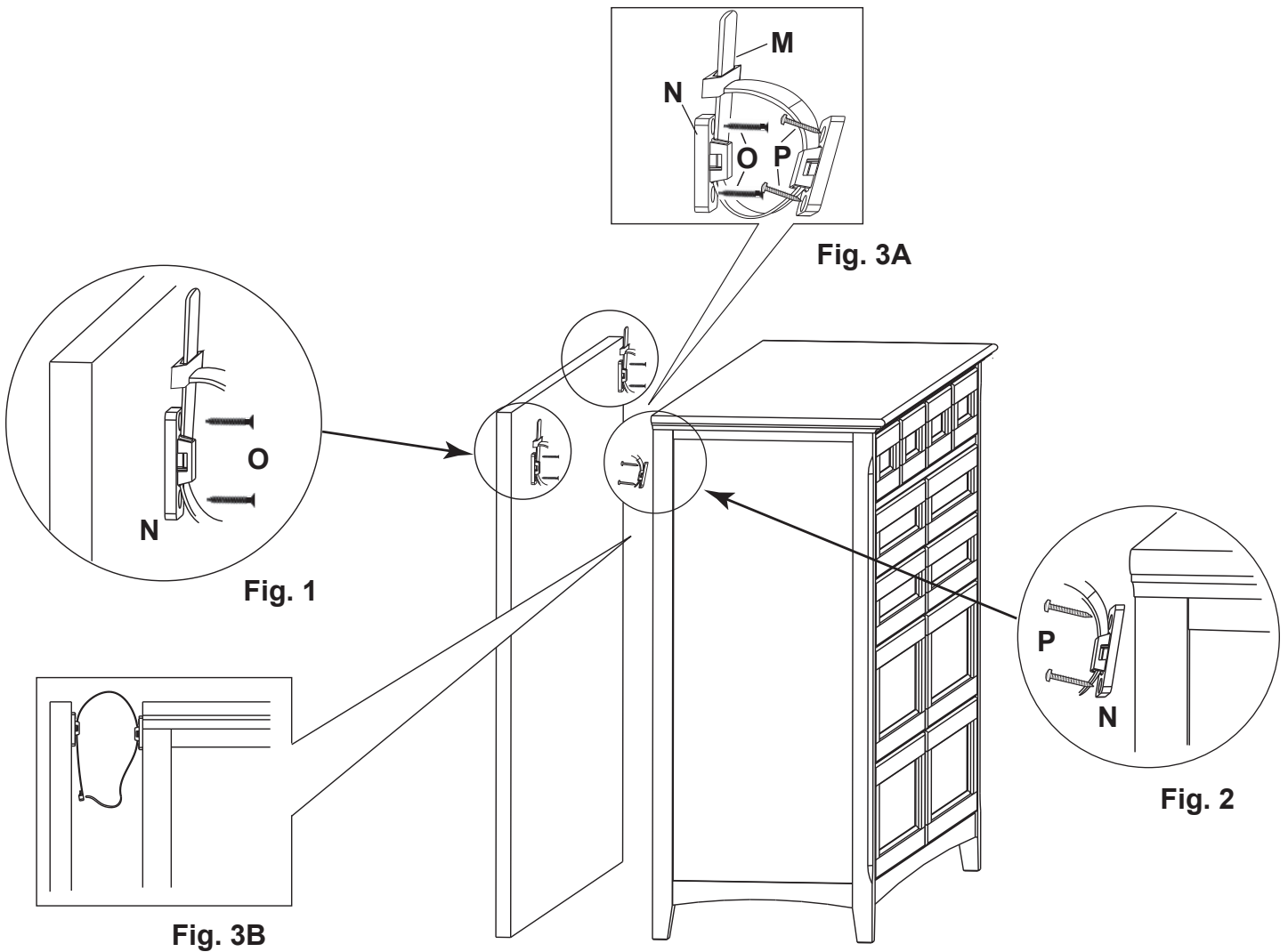
N – Clip



O – #8 x 2" Black Screw



P – #8 x 1" Pan Screw



TO LEVEL THE UNIT:

1. Adjustable glides are attached to the bottom of the unit. Rotate glides until unit stands level.

TIPPING RESTRAINT

2. Position unit at desired location. Locate stud in the wall behind unit. Attach Clip (N) to wall stud with two #8 x 2" Black Screw (O). See FIGURE 1. Attach second clip to unit with two #8 x 1" Pan Head Screw (P). See FIGURE 2. Connect the two clips with Nylon Restraint Strap (M). See FIGURE 3A AND 3B. **Note: Wider units may require two tipping restraints.**

If stud in wall cannot be located, purchase proper wall attachment hardware for your type of wall and secure the unit.